

WithSecure™ Cloud Protection for Salesforce for Financial Services

Foster trust and secure customer interactions with Salesforce

Your Salesforce CRM is critical, yet it can become a launchpad for cyber-criminals. New opportunities for attacks crop up as your business evolves. Attackers could slip in harmful files or phishing links via channels such as web forms and emails. These intrusions can lead to operational snags, damaged reputation, loss of trust, and other severe consequences.

In the financial services industry, the stakes are even higher. Trust and reputation are your lifeblood. You constantly deal with sensitive customer documents,

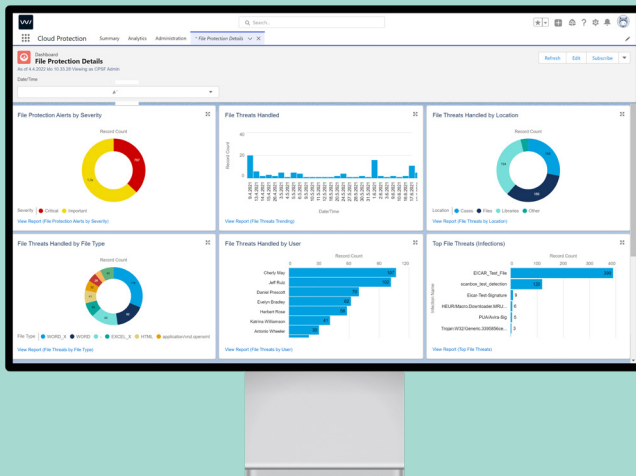
from insurance claims and images to loan-related files like contracts and statements. Your support agents need to handle these files and weblinks daily. But should they also be malware detectives? Absolutely not.

When your business lives on Salesforce, its security and smooth operation become critical

WithSecure™ Cloud Protection for Salesforce changes the game. It automatically identifies and blocks harmful files and links across Salesforce clouds and features. Your environment stays clear of any malware, phishing attempts, or unwanted content.

Unlock the full potential of your Salesforce platform

- Stop data breaches
- Secure, uninterrupted work
- Compliantly try new cloud use cases
- Create worry-free digital paths for your customers



Natively made for Salesforce: enjoy seamless, high-performance security features

Real-time protection: scans files on upload and download, includes click-time URL protection.

Instant visibility: real-time view of your environment with a complete forensics trail for incident response.

Easy setup: just click and go for immediate value - no drawn-out installation projects.

Expert team: WithSecure™ brings 30+ years in cybersecurity, a dedicated research unit, and an elite Salesforce consulting team.

Full Support: comprehensive support with a dedicated Customer Success team at WithSecure™. Plus, an option to upgrade to round-the-clock technical help.

Dependable threat analysis: hosted across various regions and availability zones for reliable delivery without a single point of failure.



Compliance assured: meets ISO 27001 and ISAE 3000 Type 2 (SOC2 Type 2) standards.